



EAST SECTOR

A Reach Revitalized for Community Growth

Buffalo Bayou's character within the East Sector is that of a large river, rich with history and charm, though often hidden behind existing industry—some functional, some derelict and abandoned. This segment of the Bayou holds enormous potential for continuation of a regional park system while allowing the East End to maintain its historic industrial base. Cut off from Downtown by freeways and railroads, the East End will enjoy new connections, improved boulevards, enhanced parks, diverse neighborhoods, and new employment opportunities through new industry.

GOALS :

Develop diverse neighborhoods

Houston's unique racial and ethnic diversity is visible throughout the city. This diversity will be expanded through redevelopment of underutilized sites along Buffalo Bayou in the East End, providing an array of public amenities as well as increased access to the waterway.

Expand Buffalo Bayou park system east to the Turning Basin and beyond, incorporating regional destinations and institutional anchors

Unique East End areas have been earmarked as special regional destinations. In addition, existing parks will be expanded and improved to better integrate nearby neighborhoods with the waterfront. New parks for recreational use, a botanical garden, and an ecology park will benefit residents as well as tourists, and can attract institutional interest in the long term.

Strengthen neighborhood connections to the Bayou

To provide strong connections for residential neighborhoods and schools, extensive tree planting, bike paths, sidewalks, and other streetscape improvements will be developed.

Revitalize East End industrial parks

Existing industry is a vital source of East End employment and must grow and evolve over time to meet challenges of the new economy. Eco-industrial parks will incorporate high-tech and biotech development, as well as offer nearby housing opportunities for employees. While still adhering to the principle of balancing conservation and development, the plan recognizes that new growth is needed for the area to remain a vital economic center.

Improve transit corridors

New transit corridors along Clinton and Navigation Boulevards will guide and direct new development eastward. Improved transit, beginning with dedicated busways and future light rail, will provide a powerful incentive to eastward business relocation, as well as encourage growth of medium-density developments and communities.



EAST SECTOR *A Reach Revitalized for Community Growth*



① Richardson Place serves as a Bayou gateway for Fifth Ward residents.



Existing Halliburton site



1 New Neighborhoods

Medium-density, mixed-use development in park-like settings will capitalize on bayou views and access at the following sites:

- Live Oak Park
- Richardson Place
- West Jensen/Bayou Redevelopment
- Alexan Redevelopment

2 Expanded and Improved Existing Parks

- *Guadalupe Park* Guadalupe Park can be expanded and reconfigured as part of the future South Canal redevelopment. Graded banks with grassy amphitheater seating will create a Bayou viewing area for water-based events.
- *Tony Marron Park* A plan is currently being developed to revitalize this existing park.

3 Symphony Island Performance Center

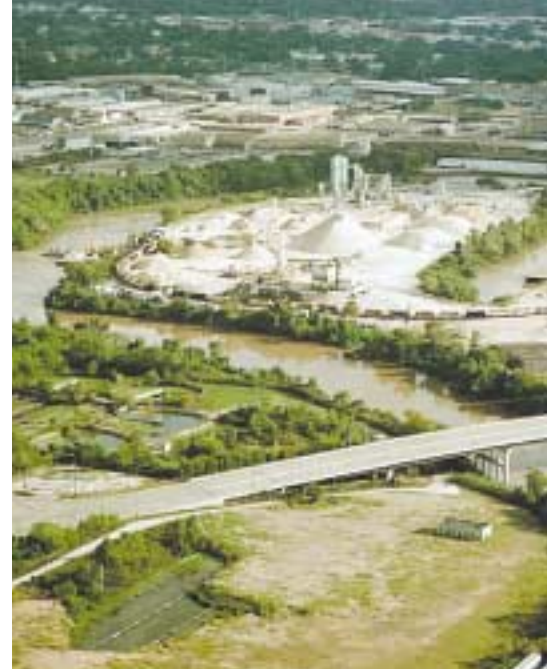
Programmed for large audiences on grassy amphitheater-type seating, this proposed open-air facility promises a sylvan setting for outdoor performances and events during Houston's temperate winters.



③ *Symphony Island*



⑤ North Side Sewage Treatment Facility redevelopment



Northside Sewage Treatment Facility and Turkey Bend oxbow



④ Turkey Bend Ecology Park



Houston's Ship Channel is the anchor for East End industry.

4 Turkey Bend Ecology Park

Houston's gift to future generations will be the gradual naturalization of Bayou-fronting land, currently occupied by marginal or polluting industrial uses. Like Memorial Park upstream, this reserve can be Houston's contribution to a continuous regional park system.

5 North Side Sewage Treatment Facility Redevelopment

A botanical garden of regional significance is envisioned at the City's derelict Northside Sewage Treatment Facility. The plan proposes that existing settling basins and other sewage treatment infrastructure be enclosed to house rare and endangered plant species for varied climates and habitats. As part of the larger Turkey Bend Ecology Park, these botanical gardens would provide a regional draw for the East End.

6 Turning Basin Overlook Park

Envisioned as a gateway to the Turning Basin, a new park on the Bayou's north bank will include the Port of Houston Authority Visitor Center and connections to existing Hidalgo Park on the south bank.

7 Boat Landings

To encourage recreational use of Buffalo Bayou, a program featuring enhanced waterfront activity and launching areas along the Bayou's length are included in the Plan. Boat landings, some coordinated with parking drop-offs, are being proposed at Jensen, North York, Lockwood, Navigation Landing, and Hidalgo Park.



BUFFALO BAYOU PARTNERSHIP
1113 Vine Street, Suite 200
Houston Texas 77002
713.752.0314

www.buffalobayou.org

Material excerpted from
Buffalo Bayou and Beyond Report,
August 2002, Thompson Design
Group, Inc./EcoPLAN

Brochure layout and design by
Peter Boyle Graphic Design