

BUFFALO BAYOU PARTNERSHIP PRESENTS  
SUMMER SPECIES 2024

# FLYWAY FIELD GUIDE

BAYOU BUTTERFLIES







YOUR GUIDE TO

# Bayou Butterflies

## Summer Species

Buffalo Bayou Partnership's Summer Species is an annual celebration of a native plant or animal species found along Buffalo Bayou. This series connects our community to the natural environment surrounding Buffalo Bayou through guided nature walks, public art, interactive educational opportunities, and more!

This year, we're celebrating butterflies. The Flyway Field Guide is a tool to help you learn about the butterflies of Buffalo Bayou on your own, or with a friend! Find a map of Field Guide destinations on the next page and start your journey...

JOIN THE FESTIVITIES! LEARN  
MORE ABOUT SUMMER SPECIES  
EVENTS AND PROGRAMS:



*Bring your completed Field Guide to the Visitor Center for a special butterfly prize!*

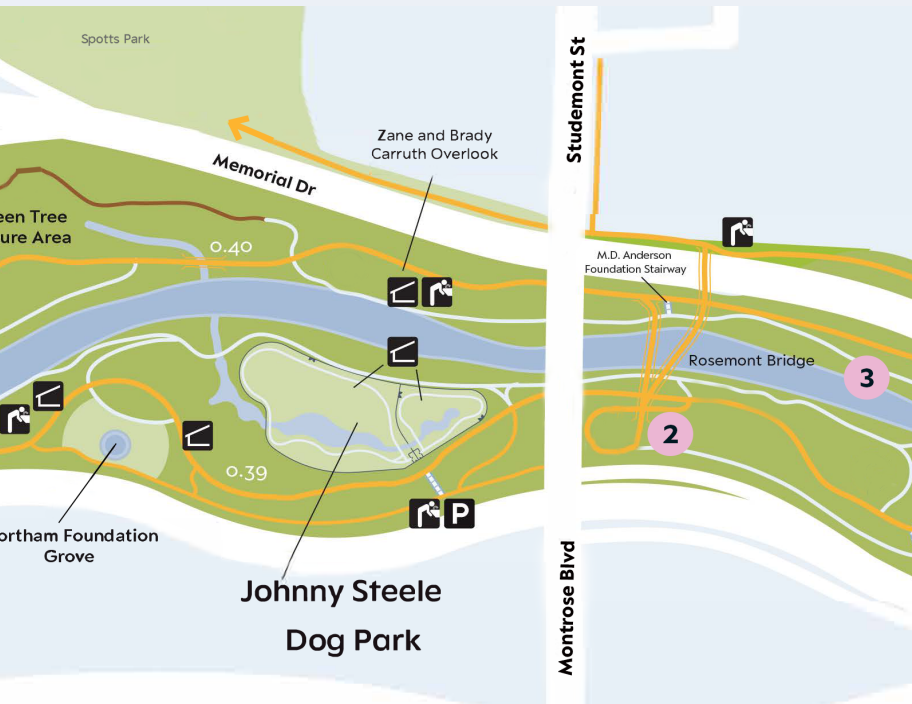
## **The Houston Monarch Story**

The Houston Monarch Story is an interactive, living installation by artist Michelle Matthews aimed at raising awareness about the Monarch butterfly's journey through Texas and important conservation efforts. **More than 500 native plants** were planted in February 2024 to create a pocket prairie in Buffalo Bayou Park. From May through November, the prairie will be animated by larger-than-life Monarch sculptures created by Matthews.

Visit the prairie near the Jackson Hill Bridge at Allen Parkway to see the butterflies who call it home and learn more about the lives of these important insects.







## Key

- 1 The Houston Monarch Story Pollinator Prairie
- 2 Jaime Plensa Sculptures Wildflower Area
- 3 Rosemont Bridge Wildflower Area
- 4 Scurlock Overlook Wildflower Area

# Flutter Friends

## ARE BUTTERFLIES IMPORTANT?

Butterflies, moths, and other pollinator species, like bees, hummingbirds, and bats, are very important to a healthy ecosystem. These pollinators spread pollen from one plant to another, helping new flowers, fruits, vegetables, and trees to grow healthy and strong. It's important to protect and cultivate the plants and habitats that support pollinator life, as they help our lives in many ways!

## ACTIVITY

Match the butterfly species name with its wing!

Monarch

*Danaus plexippus*

Polyphemus Moth

*Antheraea polyphemus*

Red Admiral

*Vanessa atalanta*





## DO YOU KNOW YOUR BUTTERFLIES?

There are hundreds of species of butterflies, many of which call Buffalo Bayou home! While **Monarch butterflies** may be the most recognizable, there are many others that you might see in your yard, the park, or at school. Large species like the **Gulf Fritillary, Eastern Tiger Swallowtail, and Black Swallowtail** butterflies, and **Luna** and **Polyphemus** moths are easier to spot. Look a little closer to see smaller species like the **American Snout, Yellow Sulphur, and Red Admiral** butterflies.

**Gulf Fritillary**  
*Agraulis vanillae*

**Eastern Tiger Swallowtail**  
*Papilio glaucus*

**Luna Moth**  
*Actias luna*

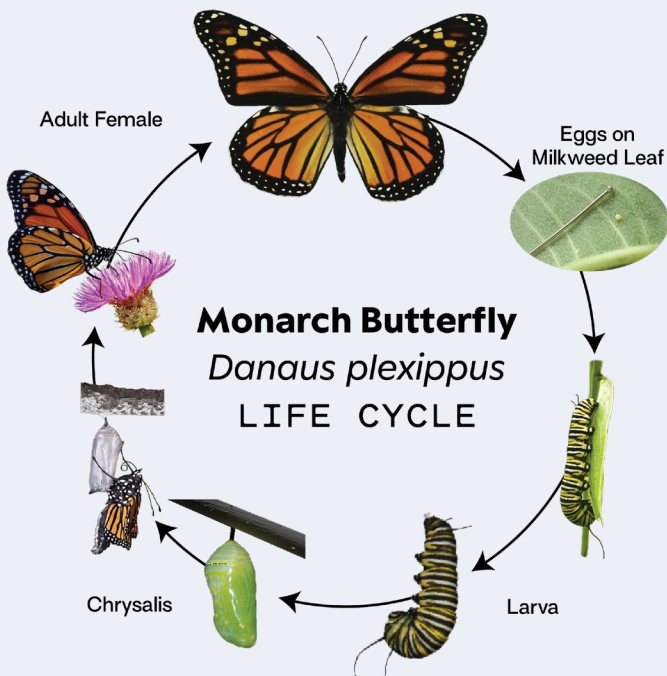


Key, L-R: Red Admiral, Luna Moth, Gulf Fritillary, Monarch, Polyphemus Moth, Eastern Tiger Swallowtail

# Life Lessons

## WHERE DO BUTTERFLIES COME FROM?

Butterflies and moths start out as **eggs**, which hatch into **caterpillars**. Caterpillars eat and eat and eat to reach full size before forming a **chrysalis** or **cocoon** to begin their final transformation. After 10-14 days, the chrysalis or cocoon opens and a fully grown **butterfly** or **moth** emerges!



## ACTIVITY

Add color to bring the butterfly life cycle design to life!



# Migration Magic

## DO BUTTERFLIES LIKE TO TRAVEL?

Like some species of birds, butterflies travel - or **migrate** - during the spring and fall to reach their summer and winter homes. Four generations of Monarch butterflies **migrate 3,000 miles** from Mexico to as far north as Canada annually, stopping in Houston along the way. **Coastal Prairie plants** like Goldenrod, Liatris, and Coneflower provide food and habitat, and a place for butterflies to lay their eggs.

## ACTIVITY

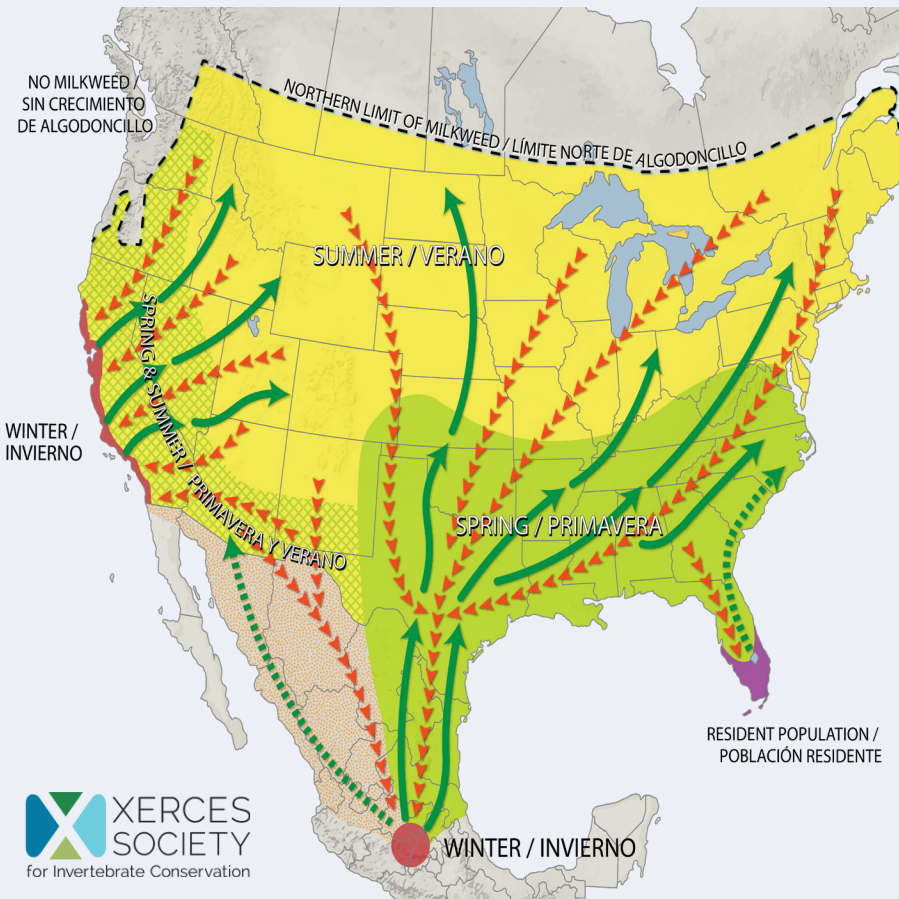
Complete the Pollinator Prairie Scavenger Hunt!

HOW MANY BUTTERFLIES DO YOU SEE? WHAT COLORS ARE THEY?

HOW MANY CATERPILLARS DO YOU SEE? HOW MANY LOOK FUZZY?

WHAT ARE THE BRIGHTEST WILDFLOWER COLORS YOU SEE?

HOW MANY DIFFERENT TYPES OF FLOWERS CAN YOU COUNT?



## LEGEND / LA LEYENDA

Overwintering areas	<span style="display: inline-block; width: 15px; height: 15px; background-color: red; border: 1px solid black;"></span> Zona de invernada
Spring breeding areas	<span style="display: inline-block; width: 15px; height: 15px; background-color: lightgreen; border: 1px solid black;"></span> Zona de reproducción de primavera
Spring & summer breeding areas	<span style="display: inline-block; width: 15px; height: 15px; background: repeating-linear-gradient(45deg, transparent, transparent 2px, lightgreen 2px, lightgreen 4px); border: 1px solid black;"></span> Zona de reproducción de primavera y verano
Summer breeding areas	<span style="display: inline-block; width: 15px; height: 15px; background-color: yellow; border: 1px solid black;"></span> Zona de reproducción de verano
No breeding area	<span style="display: inline-block; width: 15px; height: 15px; background-color: grey; border: 1px solid black;"></span> Sin zona de reproducción

Resident population	<span style="display: inline-block; width: 15px; height: 15px; background-color: purple; border: 1px solid black;"></span> Población residente
Potential breeding habitat	<span style="display: inline-block; width: 15px; height: 15px; background: repeating-linear-gradient(45deg, transparent, transparent 2px, orange 2px, orange 4px); border: 1px solid black;"></span> Hábitat no confirmada de reproducción
Fall migration	<span style="display: inline-block; width: 15px; height: 15px; border-left: 2px dashed red; border-right: 2px dashed red;"></span> La migración de otoño
Spring migration	<span style="display: inline-block; width: 15px; height: 15px; border-left: 2px solid green; border-right: 2px solid green;"></span> La migración de primavera
Unconfirmed migration	<span style="display: inline-block; width: 15px; height: 15px; border-left: 2px dashed green; border-right: 2px dashed green;"></span> Ruta de migración no confirmada

# Pollinator Pride

## DO BUTTERFLIES HAVE FAVORITE PLANTS?

Butterflies and moths, like other pollinators, need native plant species for food, shelter, and places to lay their eggs.

**Monarch butterflies love native types of Milkweed** - Green Milkweed, Aquatic Milkweed, and Butterfly Milkweed are their favorites in Texas! Without these plants, Monarch butterflies are not able to grow and thrive.

Non-native species of Milkweed, like Tropical Milkweed, can actually be harmful to Monarch eggs and cause deformities that effect growth.

## ACTIVITY

What kind of plants are butterfly favorites? Circle each plant you think a butterfly will love!



Aquatic Milkweed  
*Asclepias perennis*



Blazing Star  
*Liatris pycnostachya*



Tropical Milkweed  
*Asclepias curassavica*

## HOW CAN I HELP BUTTERFLIES?

There are many ways you can help butterflies and other pollinators at home and in your community!

- **At home:** plant a variety of native species in your yard so there are flowers and grasses that can host butterflies.
- **In your neighborhood:** work with your favorite park or green space to improve pollinator habitat and establish “pocket” Coastal Prairies.
- **In your community:** spread the word about the importance of native plant species to all types of pollinators!

*HINT: Butterflies love NATIVE (N) flowers!*



Green Milkweed  
*Asclepias viridis*

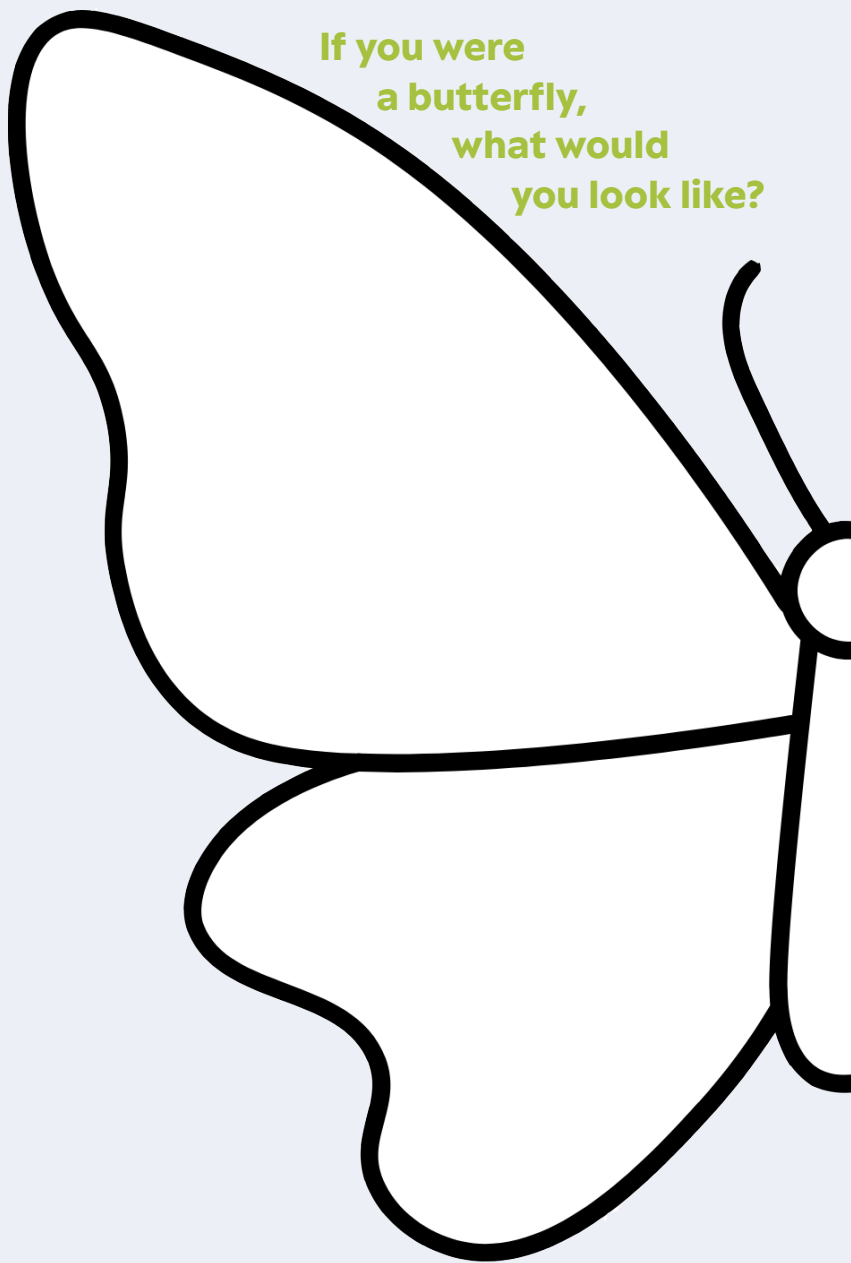


Texas Coneflower  
*Rudbeckia texana*

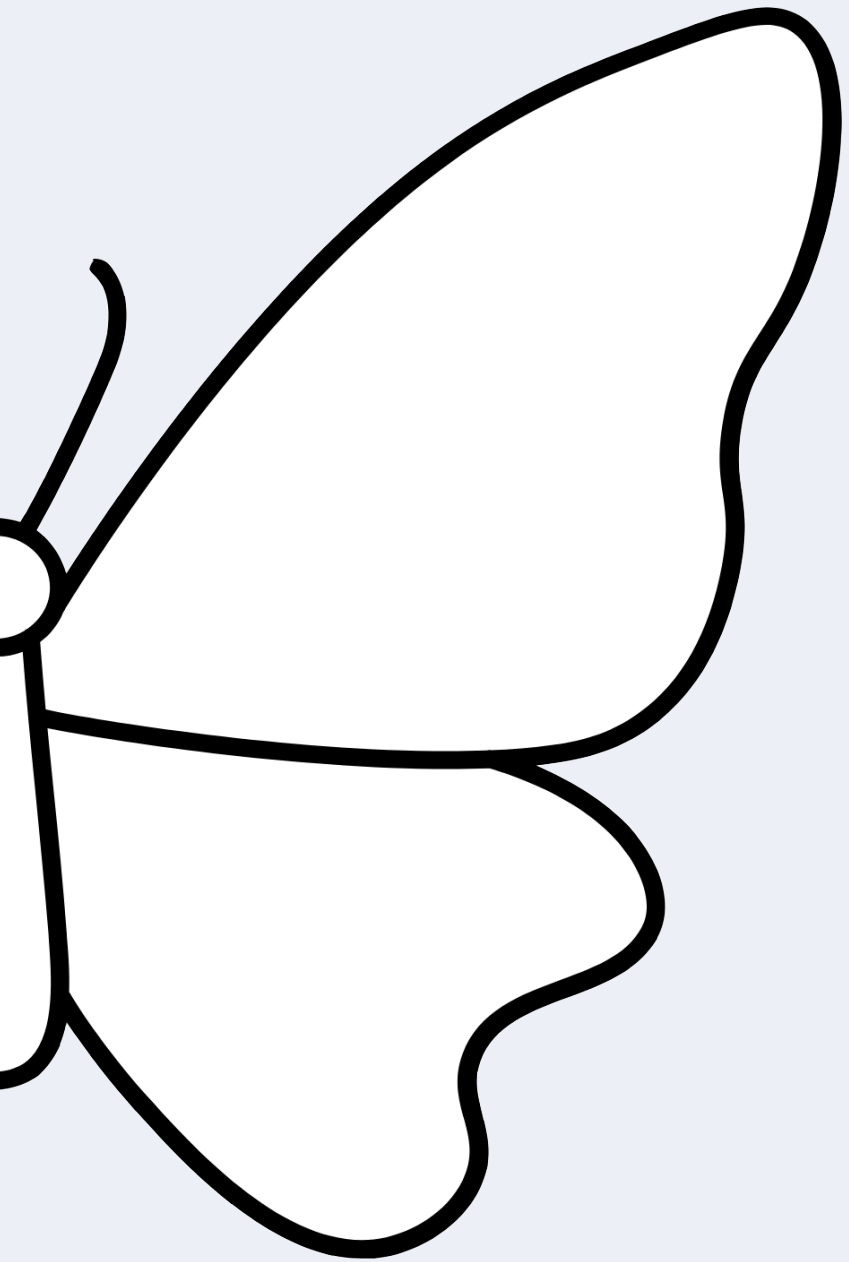


Butterfly Milkweed  
*Asclepias tuberosa*

**If you were  
a butterfly,  
what would  
you look like?**







## **Buffalo Bayou Partnership**

Established in 1986, Buffalo Bayou Partnership (BBP) is the non-profit organization creating and stewarding welcoming parks, trails, and unique spaces, connecting Houstonians with the city's most significant natural waterway. The organization's geographic focus is the 10-square mile stretch of the bayou that flows from Shepherd Drive, through the heart of downtown into the East End, and on to the Port of Houston Turning Basin. In addition to constructing award-winning green spaces such as Buffalo Bayou Park, BBP also removes trash from the waterway and activates the bayou through unique programs, public art, volunteer events, and recreational opportunities that enrich the quality of life in Houston.

## **The Houston Monarch Story**

The Houston Monarch Story is an educational project by artist Michelle Matthews that introduces the viewers to the Monarch butterfly's plight. After discovering the harmful effects of non-native milkweed on the development of Monarch butterflies, Matthews was inspired to help educate others about the Monarch, its life cycle, habitat, and migration. Using resources available within the Houston community, The Houston Monarch Story is a living installation, illustrating the Monarch's story through ecology and sculpture.

Generous support for Summer  
Species is provided by



Buffalo Bayou Partnership is



FUNDED IN PART BY  
**THE CITY OF HOUSTON**  
THROUGH  
**HOUSTON ARTS ALLIANCE**

The Houston Monarch Story is  
supported by



FUNDED IN PART BY  
**THE CITY OF HOUSTON**  
THROUGH  
**HOUSTON ARTS ALLIANCE**



**UH Coastal Center**  
UNIVERSITY OF **HOUSTON**

**Cynthia Woods  
Mitchell Center  
for the Arts**  
UNIVERSITY OF HOUSTON





# Buffalo Bayou Partnership

[buffalobayou.org](http://buffalobayou.org) | [@buffalobayou](https://www.instagram.com/buffalobayou)